



# MONTHLY MEMBERSHIP PROGRESS REPORT

District 324B4

Results as of: 06/30/2019

GMT: N S SANKAR

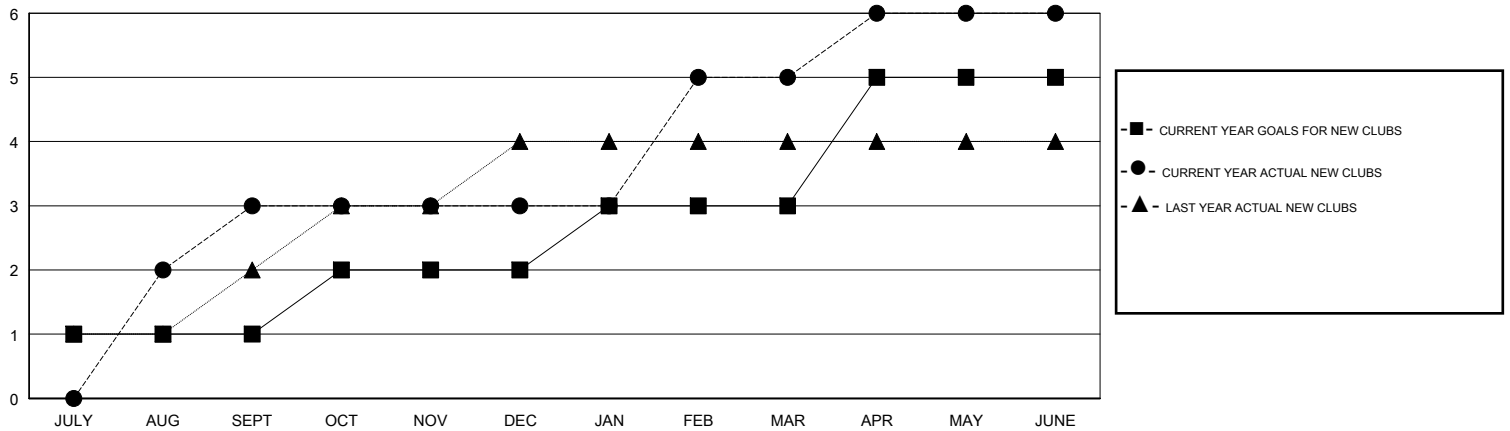
LOCATION INDIA

GMT CA

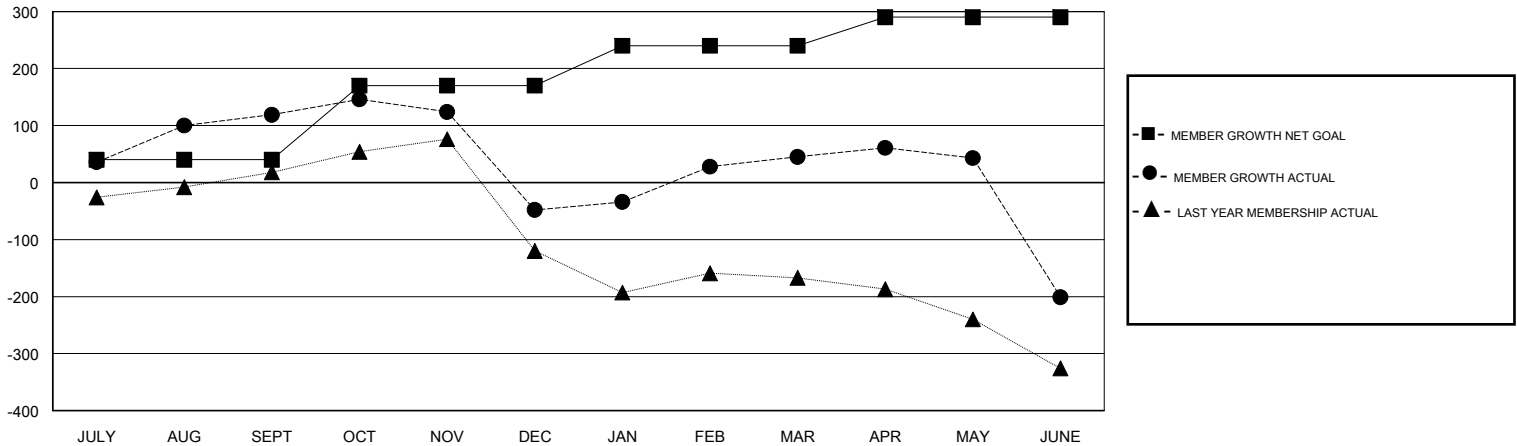
Clubs			
RESULTS FOR 2018-2019			
QUARTER	NEW CLUB GOAL	NEW CLUBS	DROPPED CLUBS
JULY/AUG/SEPT	1	3	0
OCT/NOV/DEC	1	0	7
JAN/FEB/MAR	1	2	2
APR/MAY/JUNE	2	1	3

Members			
RESULTS FOR 2018-2019			
QUARTER	MEMBER GROWTH NET GOAL	MEMBER GROWTH ACTUAL	DROPPED MEMBERS ACTUAL (including transfers)
JULY/AUG/SEPT	40	201	67
OCT/NOV/DEC	130	101	267
JAN/FEB/MAR	70	259	111
APR/MAY/JUNE	50	141	357

GOALS AND ACTUAL NEW CLUBS CUMULATIVE



GOALS AND ACTUAL MEMBERS CUMULATIVE



DROPPED CLUBS: 12	90 CLUBS OF 134 ADDED 1 OR MORE NEW MEMBERS	<u>GENDER DISTRIBUTION</u> MALE 3,500 (81.99%) FEMALE 769 (18.01%) Women Percentage Fiscal Year Goal: 30%
<u>DROPPED MEMBERS</u> DECEASED 23 CLUB CANCELLED 269 OTHER 510 TOTAL 802	<a href="#">CLICK HERE FOR CUMULATIVE MEMBERSHIP DATA</a>	TOTAL FAMILY UNIT MEMBERS 1,369 FAMILY MEMBERS PAYING HALF DUES 727